

LOW PROFILE (PFC SERIES) PCB POWER TRANSFORMERS, 50/60HZ, PRIMARY 115/230V, SECONDARIES 5.0V to 120V @ 1.1 to 38VA

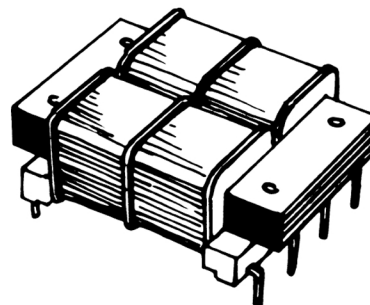
- **Split Bobbin**—Primaries and secondaries wound side by side. High isolation for low leakage applications.
- Low capacity coupling minimizes noise and false triggering.
- **Hum-bucking semi-toroidal construction.**



Contact Thordarson Meissner Sales
For Current Agency File Numbers

115/230V, 50/60 Hz Primary

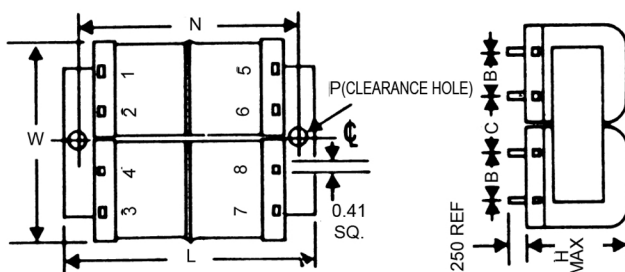
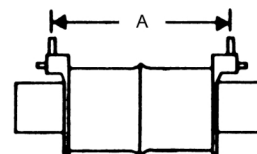
Part Number		VA Size	Secondary RMS Ratings			
Thordarson Inc.	Thordarson Meissner		Series Connected		Parallel Connected	
			AC Volts	RMS Amp	Volts	RMS Amp
PF2.5-10-T	PFC200	2.5	10CT	.250	5	.500
PF6-10-T	PFC202	6	10CT	.600	5	1.2
PF12-10-T	PFC204	12	10CT	1.2	5	2.4
PF24-10-T	PFC206	24	10CT	2.4	5	4.8
PF48-10-T	PFC208	48	10CT	4.8	5	9.6
PF2.5-12-T	PFC210	2.5	12.6CT	.200	6.3	.400
PF6-12-T	PFC212	6	12.6CT	.450	6.3	.900
PF12-12-T	PFC214	12	12.6CT	.900	6.3	1.8
PF24-12-T	PFC216	24	12.6CT	1.9	6.3	3.8
PF48-12-T	PFC218	48	12.6CT	3.8	6.3	7.6
PF2.5-16-T	PFC220	2.5	16CT	.150	8	.300
PF6-16-T	PFC222	6	16CT	.350	8	.700
PF12-16-T	PFC224	12	16CT	.700	8	1.4
PF24-16-T	PFC226	24	16CT	1.5	8	3.0
PF48-16-T	PFC228	48	16CT	3.0	8	6.0
PF2.5-20-T	PFC230	2.5	20CT	.125	10	.250
PF6-20-T	PFC232	6	20CT	.300	10	.600
PF12-20-T	PFC234	12	20CT	.600	10	1.2
PF24-20-T	PFC236	24	20CT	1.2	10	2.4
PF48-20-T	PFC238	48	20CT	2.4	10	4.8
PF2.5-24-T	PFC240	2.5	24CT	.100	12	.200
PF6-24-T	PFC242	6	24CT	.250	12	.500
PF12-24-T	PFC244	12	24CT	.500	12	1.0
PF24-24-T	PFC246	24	24CT	1.0	12	2.0
PF48-24-T	PFC248	48	24CT	2.0	12	4.0
PF2.5-30-T	PFC190	2.5	30CT	.085	15	.170
PF6-30-T	PFC192	6	30CT	.200	15	.400
PF12-30-T	PFC294	12	30CT	.400	15	.800
PF24-30-T	PFC296	24	30CT	.800	15	1.6
PF48-30-T	PFC298	48	30CT	1.6	15	3.2
PF2.5-34-T	PFC250	2.5	34CT	.075	17	.150
PF6-34-T	PFC252	6	34CT	.170	17	.340
PF12-34-T	PFC254	12	34CT	.340	17	.680
PF24-34-T	PFC256	24	34CT	.700	17	1.4
PF48-34-T	PFC258	48	34CT	1.4	17	2.8
PF2.5-40-T	PFC260	2.5	40CT	.060	20	.120
PF6-40-T	PFC262	6	40CT	.150	20	.300
PF12-40-T	PFC264	12	40CT	.300	20	.600
PF24-40-T	PFC266	24	40CT	.600	20	1.2
PF48-40-T	PFC268	48	40CT	1.2	20	2.4
PF2.5-56-T	PFC270	2.5	56CT	.045	28	.090
PF6-56-T	PFC272	6	56CT	.100	28	.200
PF12-56-T	PFC274	12	56CT	.200	28	.400
PF24-56-T	PFC276	24	56CT	.425	28	.850
PF48-56-T	PFC278	48	56CT	.850	28	1.7
PF2.5-88-T	PFC280	2.5	88CT	.028	44	.056
PF6-88-T	PFC282	6	88CT	.065	44	.130
PF12-88-T	PFC284	12	88CT	.130	44	.260
PF2.5-120-T	PFC290	2.5	120CT	.020	60	.040
PF6-120-T	PFC292	6	120CT	.050	60	.100
PF12-120-T	PFC324	12	120CT	.100	60	.200
PF2.5-230-T	PFC300	2.5	230CT	.010	115	.020
PF6-230-T	PFC302	6	230CT	.025	115	.050
PF12-230-T	PFC334	12	230CT	.050	115	.100



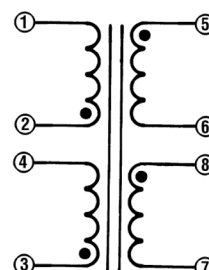
Dimensions in inches

VA Size	L	W	H	N	Pin Size	Hole Size P	A	B	C
2.4	1.875	1.562	.650	N/A	.041 x .020	N/A	1.6	.375	.375
6	1.875	1.562	.850	N/A	.041 x .020	N/A	1.6	.375	.375
12	2.500	2.000	1.065	N/A	.041 x .020	N/A	2.0	.500	.500
24	2.875	2.250	1.250	2.41	.041 x .041	For #4 Screw	1.9	.600	.530
48	3.125	2.500	1.375	2.62	.041 x .041	For #6 Screw	2.18	.600	.660

Dimensions are for reference only.



Dual Primaries



115/230v, 50/60 Hz